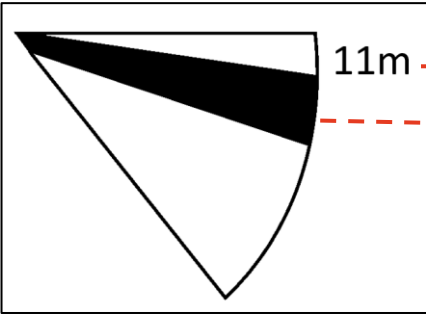


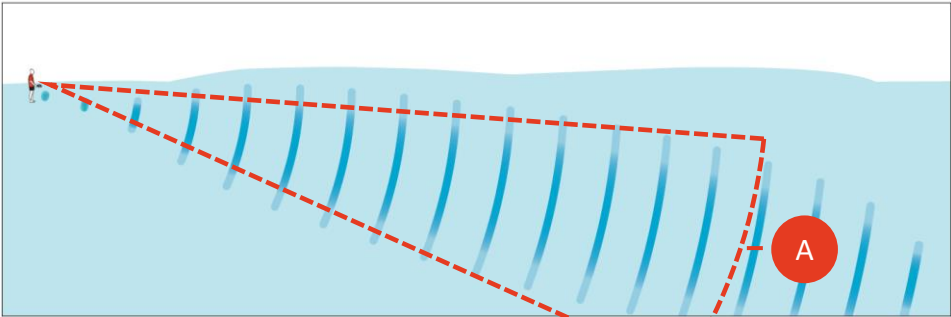
# New AquaEye Features

## Scan Depth Indicator



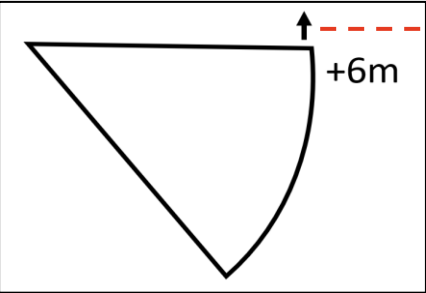
A

The Scan Depth Indicator can be used to determine the approximate depth of the sonar beam.



B

The angle of the beam is shown by the moving sector.

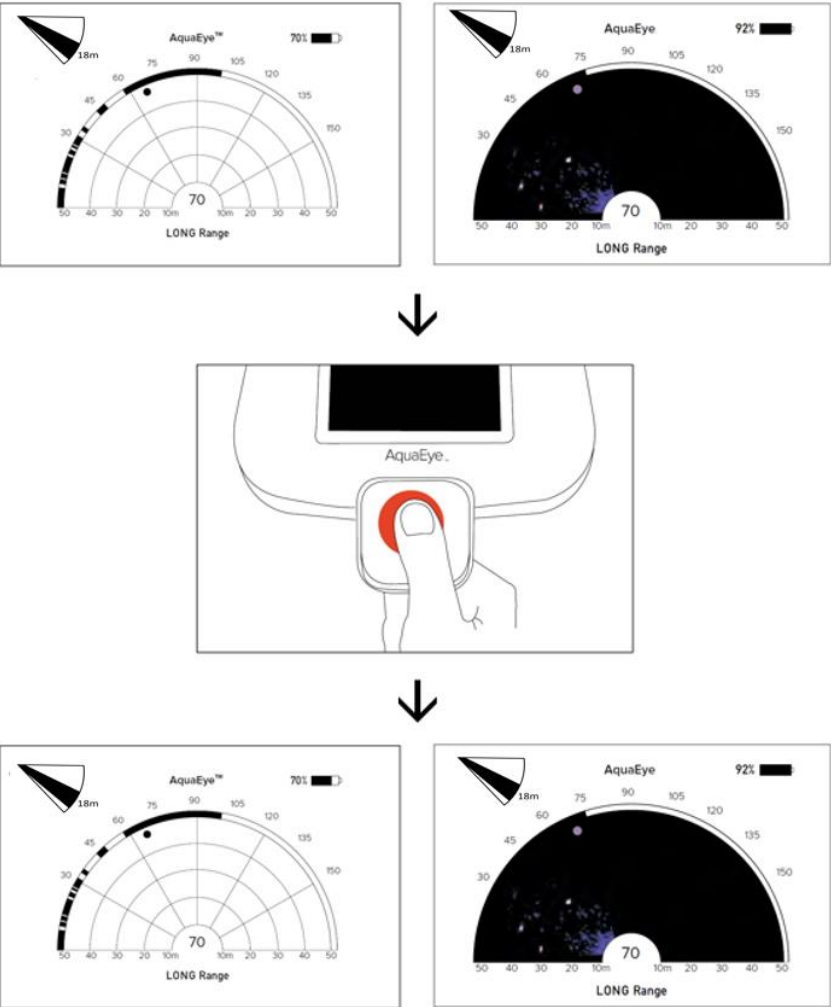


C

An upwards or downwards arrow indicates the Scan Depth is outside of the visual display.

# New AquaEye Features

## Scan Restoration

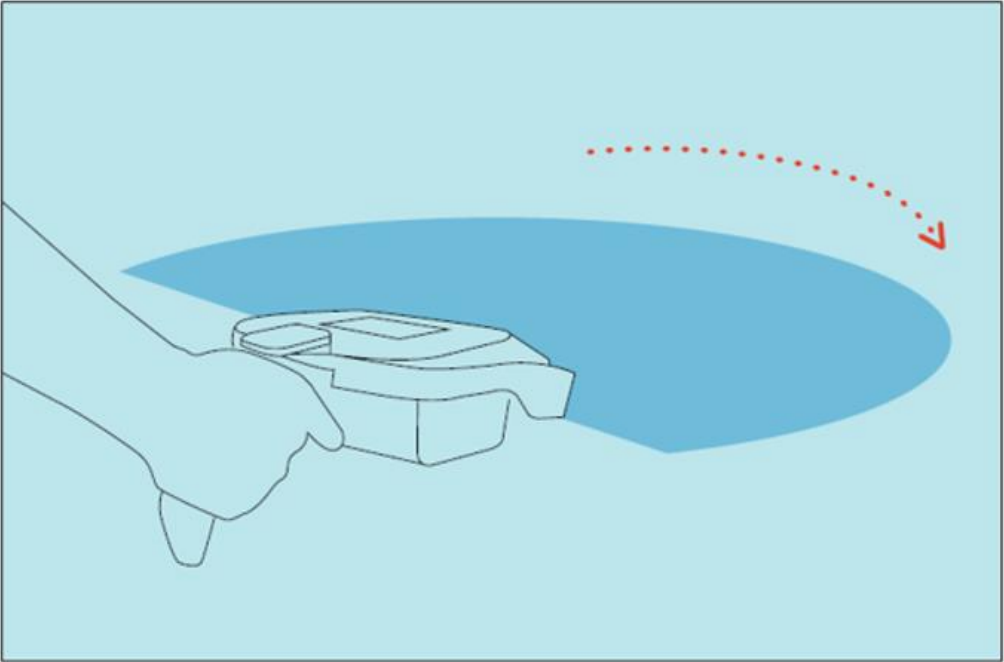


**Don't Lose Your Data.** When you power off AquaEye, the unit saves the last scan performed. Both the saved Target Display and saved Echo Map Display are available immediately upon the unit being powered on again.

# New AquaEye Features

## Increased Sonar Speed

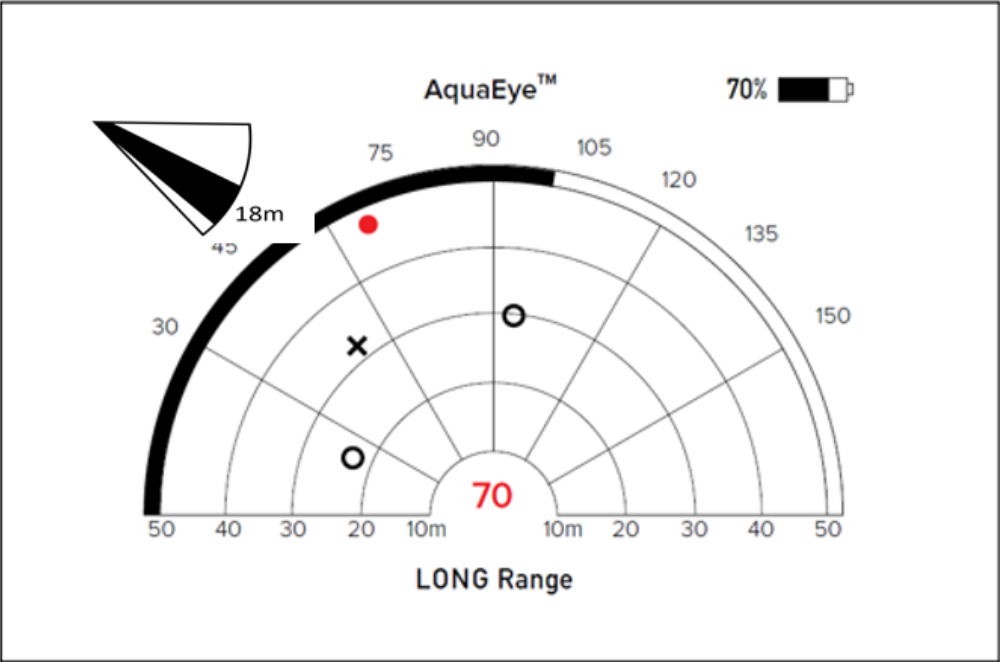
---



**Scan Faster.** In Short and Medium Range Mode, AquaEye now generates sonar pings more rapidly, allowing users to scan faster in Short and Medium Range Mode.

# New AquaEye Features

## Compass Autocalibration



The Compass now calibrates itself whenever the unit is stationary. This calibration is more robust to temperature changes.

If ever the Compass is drifting or inaccurate, simply leaving AquaEye® stationary with its power on for 5 minutes will allow the Compass to recalibrate.